



# Roma

PTRMA6629

66" L x 29 $\frac{1}{8}$ " W x 26" H

*other size available*

PTRMA6228

62 $\frac{1}{4}$ " L x 28 $\frac{3}{8}$ " W x 24 $\frac{3}{8}$ " H

Freestanding acrylic bathtub

Streamlined, high-profile one-piece design

Includes polished chrome waste and slot overflow

Tailpiece is not included

Material	Acrylic
Color/Finish	White Gloss
Slope of Backrest	65°
Water Depth	18 $\frac{7}{8}$ "
Capacity	57G
Weight	79lbs (35.8kg)
Shipping Weight	101lbs (45.8kg)
Warranty	5 Year Warranty for Residential Use

Codes/Standards Applicable:

Meets or exceeds ANSI/ASME standard Z124.1.2 and

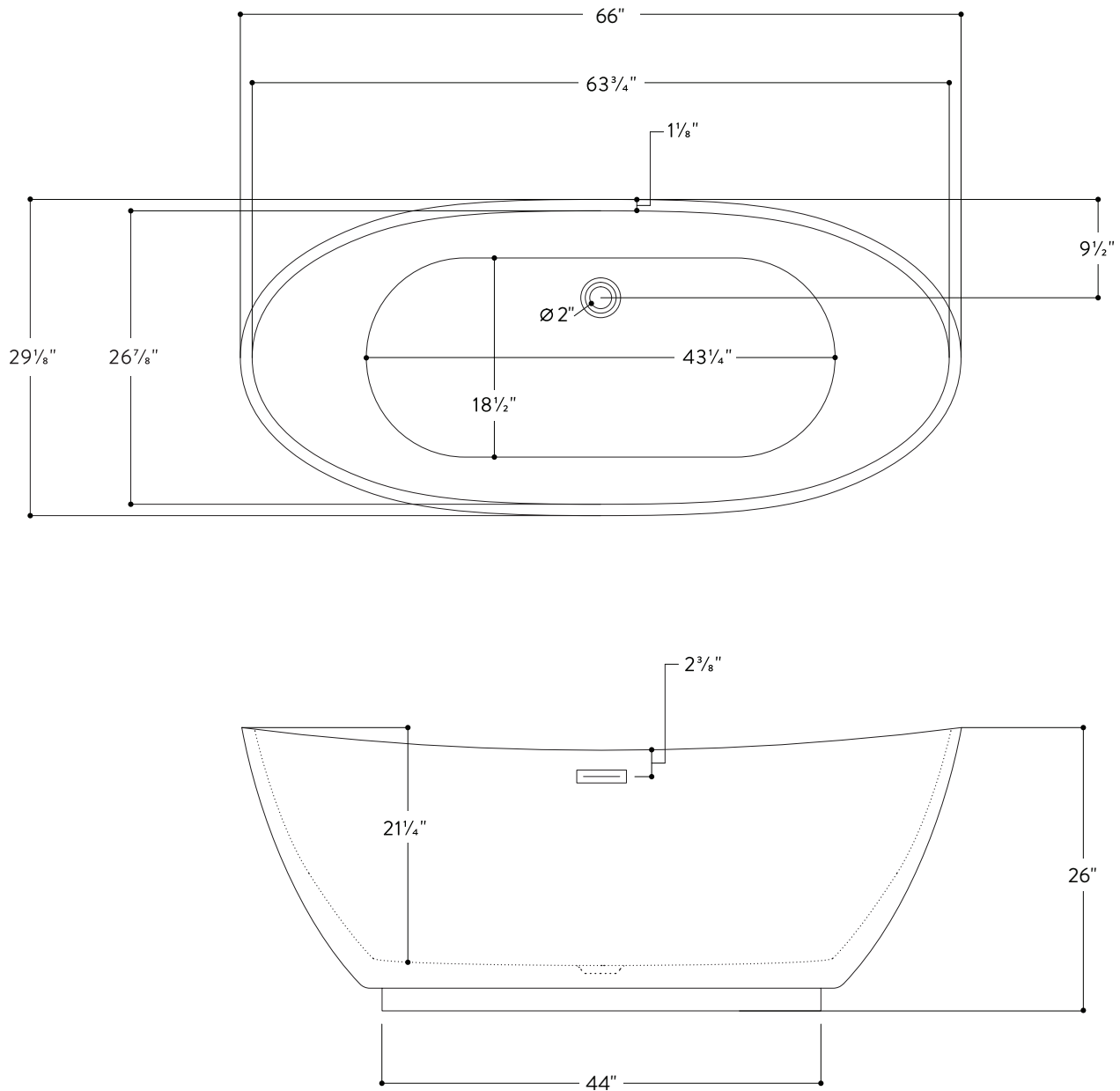
CAN/CSA B 45 requirements

IAPMO/UPC/cUPC



Install this product according to the installation guide. Floor support under bath must provide for a minimum of 1400lbs (635kg). Installation may vary. Our products must be installed by certified professionals only and according to our installation guide, as well as federal, provincial/state and local building codes and regulations.

All measurements are approximate and for comparison only. Please note that these dimensions and specifications are subject to change without notice.



All measurements are approximate and for comparison only. Please note that these dimensions and specifications are subject to change without notice.